



SYMON SMITH

RESIDENTIAL & COMMERCIAL ESTATE AGENTS
AND PROPERTY MANAGEMENT

240 Stamford Hill, London, N16 6TT

Sales: 020 8802 0025
sales@symonsmith.co.uk
Management: 020 8802 0022
management@symonsmith.co.uk



274 Craven Park Road, London, N15 6AE

£800,000

Nestled on Craven Park Road in London, this charming four-bedroom town house offers a delightful blend of comfort and convenience. Spanning an impressive 1,170 square feet, the property features a spacious reception room that serves as the perfect gathering space for family and friends.

The four well-appointed bedrooms include a master suite with an en suite bathroom, providing a private retreat for relaxation. The additional bathroom ensures ample facilities for the household, making morning routines a breeze.

One of the standout features of this home is its low-maintenance garden, ideal for those who wish to enjoy outdoor space without the burden of extensive upkeep. This area is perfect for summer barbecues or simply unwinding after a long day.

Situated close to local amenities, residents will find everything they need within easy reach, from shops to cafes. For those who enjoy the outdoors, Springfield Park is just a short walk away, offering beautiful green spaces for

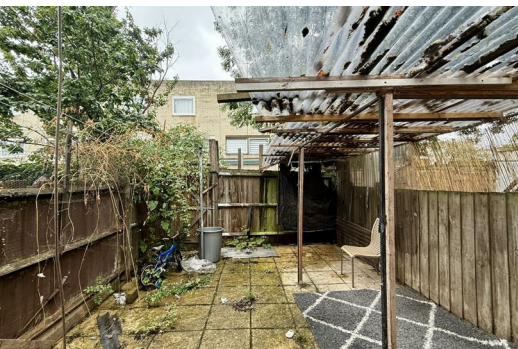
- Four Spacious bedrooms
- Front and Rear Garden
- EPC Rating C
- Large kitchen/ dining room
- Short Walk to Springhill park
- Council Tax Band D
- Ground floor WC and upstairs bathroom
- Near to local schools and shops

Craven Park Road, London, N15 6UE



Total Area: 108.7 m² ... 1170 ft² (excluding porch, garden)

All measurements are approximate and for display purposes only.



WWW.SYMONSMITH.CO.UK

Symon Smith Ltd, registered in England 110 Lancaster Road, New Barnet, Herts EN4 8AL No. 3600107 VAT No. 247 764 331